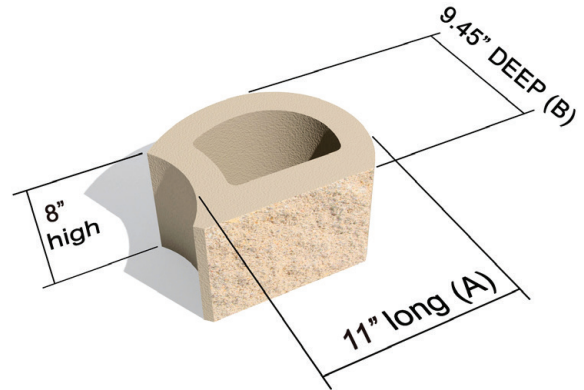
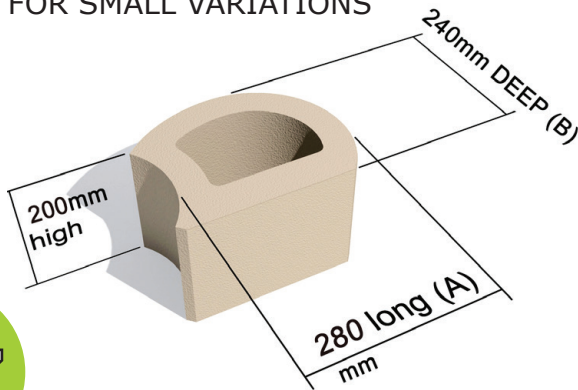


TERRAFORCE®



The original, reversible, hollow core retaining block

ALLOW FOR SMALL VARIATIONS

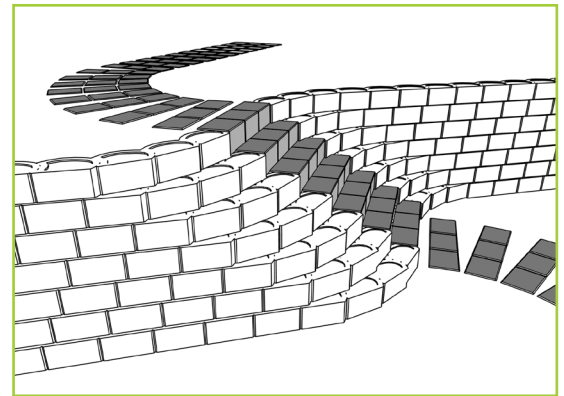


L17

L17 STANDARD

L17 ROCKFACE

Block L17	MU	IU
Vertical surface area	17,8/m ²	1,6/ft ²
Average block mass	15.44kg	34.64 lb
Block infill volume	0.00475 m ³	0.17 ft ³
Block wall thickness	45 mm	1.77"
Average constr. mass per m2 – ft2 of wall. Single skin		
When filled with topsoil of 1500kg/m ³	401 kg/m ²	82 lb/ft ²
When filled with gravel of 1900kg/m ³	435 kg/m ²	89 lb/ft ²
When filled with concrete of 2400kg/m ³	477 kg/m ²	97 lb/ft ²

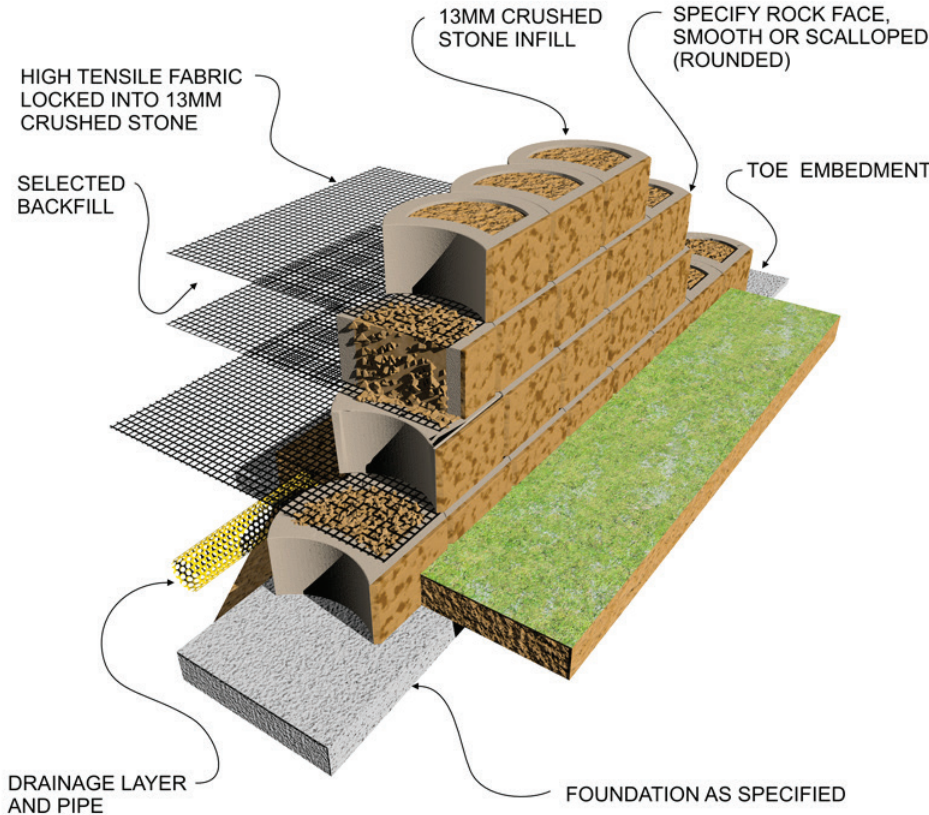


Find us on:
facebook

@TerraforceVancouver

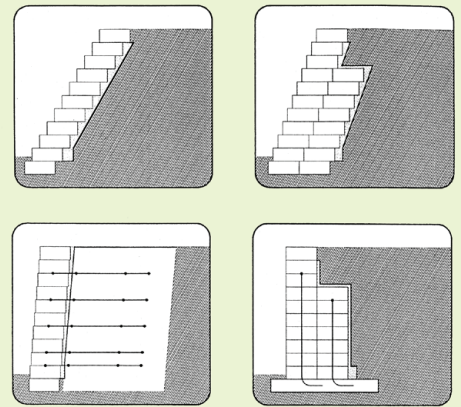
The original, reversible, hollow core retaining block

COMPOSITE RETAINING WALL (EARTH REINFORCED WITH GEOFRID)

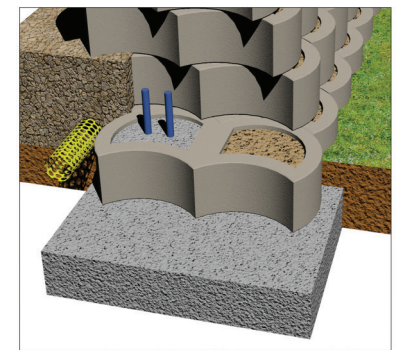
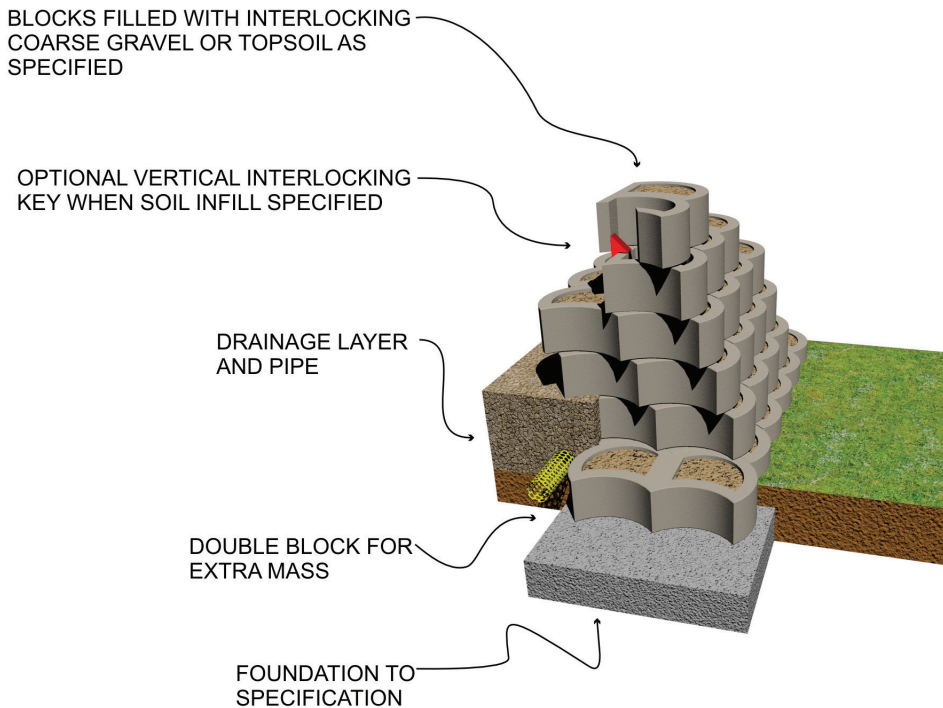


TERRAFORCE blocks have been substantially tested and analysed under field and laboratory conditions and are manufactured under licence by reputable manufacturers on five continents.

The blocks can be used as part of either a gravity system or as the fascia of a geosynthetic reinforced segmental retaining wall structure or as a fascia for a cement stabilized backfill.



MASS GRAVITY RETAINING WALL (SINGLE OR DOUBLE LAYER)



OPTIONAL R.C INFILL

TERRAFORCE®

The original, reversible, hollow core retaining block

L17



ROCK FACE WALL WITH TERRACES



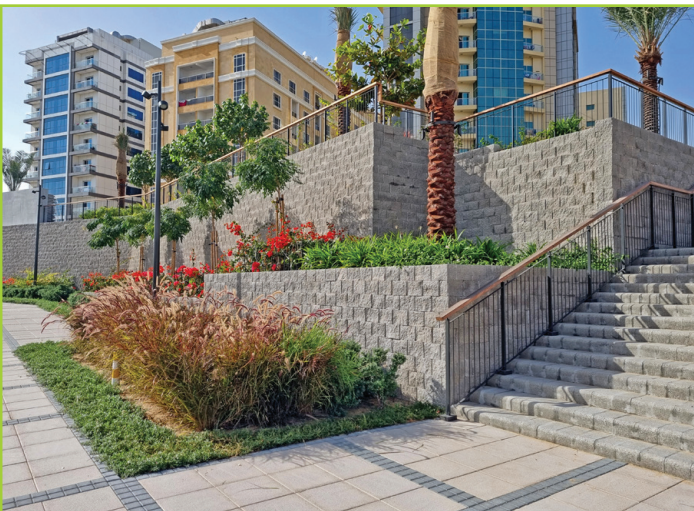
CURVED WALL, SUPPORTING HIGHWAY



ROUND FACE TERRACES AT AN INTERCHANGE



ALTERNATING ROUND AND ROCK FACE DESIGN



SHARP CORNERS WITH 4X4 STEP BLOCK STAIRS



CORNER DETAIL AT RESIDENTIAL COMPLEX

TERRAFORCE®

L17

The original, reversible, hollow core retaining block



PLANTED ROUND FACE RETAINING WALL



CURVED ROUND FACE RETAINING WALL



SOUND BARRIER WITH ALTERNATING FINISH



AFTER: PLANTED SOUND BARRIER

HOW MANY BLOCKS DO I NEED APPROXIMATELY?

Wall height	Wall Length					
	5'	10'	15'	20'	25'	30'
8" (1 row)	6	11	17	22	28	33
16" (2 rows)	12	22	34	44	56	66
24" (3 rows)	18	33	51	66	84	99
32" (4 rows)	24	44	68	88	112	132
40" (5 rows)	30	55	85	110	140	165
48" (6 rows)	36	66	102	132	168	198